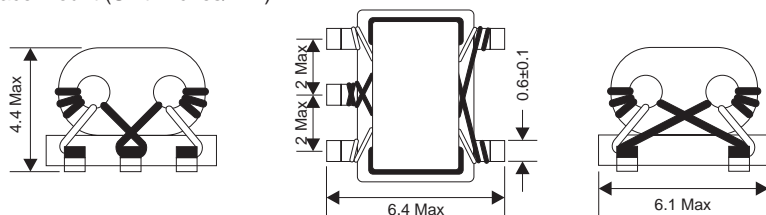




Balun Transformers

B110 Series

Surface Mount (Unit: inches/mm)



Features

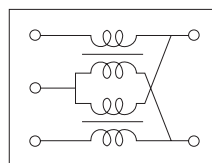
- Pair wire coil for high stability.
- Base pin terminal treated, allowing mounting 'as is' on a PCB.

Applications

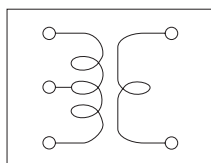
- Double balance mixers, broad-band transformers, impedance transformers, etc.

Part Number	Winding Turns	Operating Frequency Range	Insertion Loss	Pin Connection Fig.	
Double Balanced Mixer	B110-1012	1	50MHz~400MHz	10dB max.	1
	B110-1013	2	10MHz~1.0GHz	6dB max.	1
	B110-1003	3	8MHz~800MHz	3.5dB max.	1
	B110-1008	4	6MHz~600MHz	2.5dB max.	1
	B110-1011	5	5MHz~500MHz	2dB max.	1
	B110-1005	2	400MHz~1.3GHz	4dB max.	1
	B110-1085	1x2 1	-----	3dB max.	2
	B110-1052	2x2 2	9MHz~350MHz	3dB max.	2
Frequency Mixer	B110-1024	3x2 3	3.5MHz~470MHz	3dB max.	2
	B110-1086	4x2 4	2.2MHz~400MHz	3dB max.	2
	B110-1087	5x2 5	1.5MHz~300MHz	3dB max.	2
Distributor	B110-1014	-----	20MHz~600MHz	IN to OUT-1,2 4.5dB max. OUT-1 to OUT-2 (ISOLATION) 10dB min.	3
Directional Coupler	B110-1015	4	6MHz~600MHz	IN to OUT-1 1.3dB max. IN to OUT-2 11dB~14dB	4
	B110-1006	5	6MHz~600MHz	IN to OUT-1 0.9dB max. IN to OUT-2 13dB~16dB	4
	YB001-1007	6	6MHz~600MHz	IN to OUT-1 0.8db max. IN to OUT-2 15dB~17dB	4

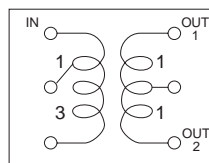
Pin Connection



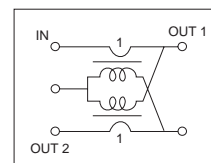
Double Balanced Mixer
Fig. 1



Transformer
Fig. 3



Distributor
Fig. 3



Directional Coupler
Fig. 4